

SIGNORE PIETA'

stampa di prova

$\text{♩} = 90$ Si - gno-re pie - tà Si - gno-re pie - tà Si -

Si - gno - re pie - tà Si -

Si - gno-re pie - tà

Si - gno-re pie - tà

Staff-1

Staff-3

The image shows a musical score for the piece 'SIGNORE PIETA'. It consists of five vocal staves and two piano accompaniment staves. The key signature is B-flat major (two flats) and the time signature is 2/4. The tempo is marked as quarter note = 90. The lyrics are: 'Si - gno-re pie - tà Si - gno-re pie - tà Si - Si - gno - re pie - tà Si - Si - gno-re pie - tà Si - gno-re pie - tà'. The piano accompaniment is written in two staves, labeled 'Staff-1' and 'Staff-3', with a brace on the left. The vocal lines are marked with dots, double quotes, double dots, and ellipses. The piano accompaniment features a simple harmonic structure with chords and moving lines in both hands.

- gno - re pie - tà pie - tà, pie - tà, pie - tà!

A musical staff in treble clef with a key signature of two flats (B-flat and E-flat). The melody consists of quarter notes and half notes, with a slur over the first two notes of the second measure. The lyrics are: gno - re pie - tà pie - tà, pie - tà, pie - tà!

gno - re pie - tà pie - tà, pie - tà, pie - tà, pie - tà!

A musical staff in treble clef with a key signature of two flats. The melody consists of quarter notes and half notes. The lyrics are: gno - re pie - tà pie - tà, pie - tà, pie - tà, pie - tà!

Si - gno - re pie - tà pie - - - tà,

A musical staff in treble clef with a key signature of two flats. The melody consists of quarter notes and half notes. The lyrics are: Si - gno - re pie - tà pie - - - tà,

Si - gno - re pie - tà pie - tà, pie - tà!

A musical staff in bass clef with a key signature of two flats. The melody consists of quarter notes and half notes. The lyrics are: Si - gno - re pie - tà pie - tà, pie - tà!

An empty grand staff consisting of two staves (treble and bass clef) with a brace on the left. The key signature is two flats. The staves are currently empty.

Cri - sto pie - tà

Cri - sto pie - tà

pie - tà

Cri - sto pie - tà

Cri - sto pie - tà

pie - tà

Cri - sto pie - tà -

pie - tà

Cri - sto pie - tà

The image shows a musical score for the hymn 'Cri - sto pie - tà'. It consists of five staves. The first four staves are vocal parts, and the fifth is a piano accompaniment. The key signature is B-flat major (two flats). The first staff (Soprano) has lyrics 'Cri - sto pie - tà' and 'Cri - sto pie - tà'. The second staff (Alto) has lyrics 'pie - tà' and 'Cri - sto pie - tà'. The third staff (Tenor) has lyrics 'Cri - sto pie - tà', 'pie - tà', and 'Cri - sto pie - tà -'. The fourth staff (Bass) has lyrics 'pie - tà' and 'Cri - sto pie - tà'. The piano accompaniment (fifth staff) features a melody in the right hand and chords in the left hand, with a fermata over the final two notes of the left hand.

pie - tà, pie - - tà! Si - gno-re pie - tà. Si - gno-re pie-

pie - tà pie - tà Si - gno - re pie-

pie - tà, pie - - tà. Si - gno-re pie-

pie - tà, pie - tà. Si - gno-re pie-

- tà Si - gno - re pie - tà pie - tà, pie - tà, pie-

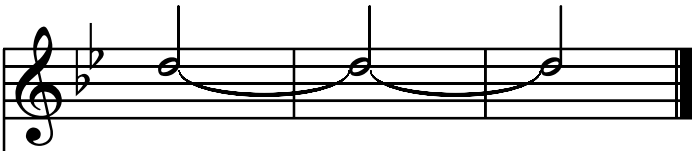
- tà. Si - gno - re pie - tà pie-tà, pie - tà, pie-

- tà Si - gno - re pie - tà, pie-tà, pie - tà, pie-

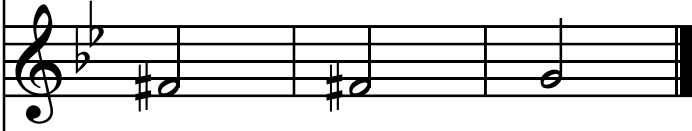
- tà Si - gno - re pie - tà, pie - tà, pie-

Grand staff piano accompaniment in G minor, 4/4 time. The right hand plays a series of chords: G4-Bb4, A4-Bb4, C5-D5, E5-F5, G5. The left hand plays a series of chords: G3-Bb3, A3-Bb3, C4-D4, E4-F4, G4. The lyrics are: - tà Si - gno - re pie - tà, pie - tà, pie-

- tà!



- tà, pie - tà!



- tà, pie - - tà!



- tà, pie - tà!

